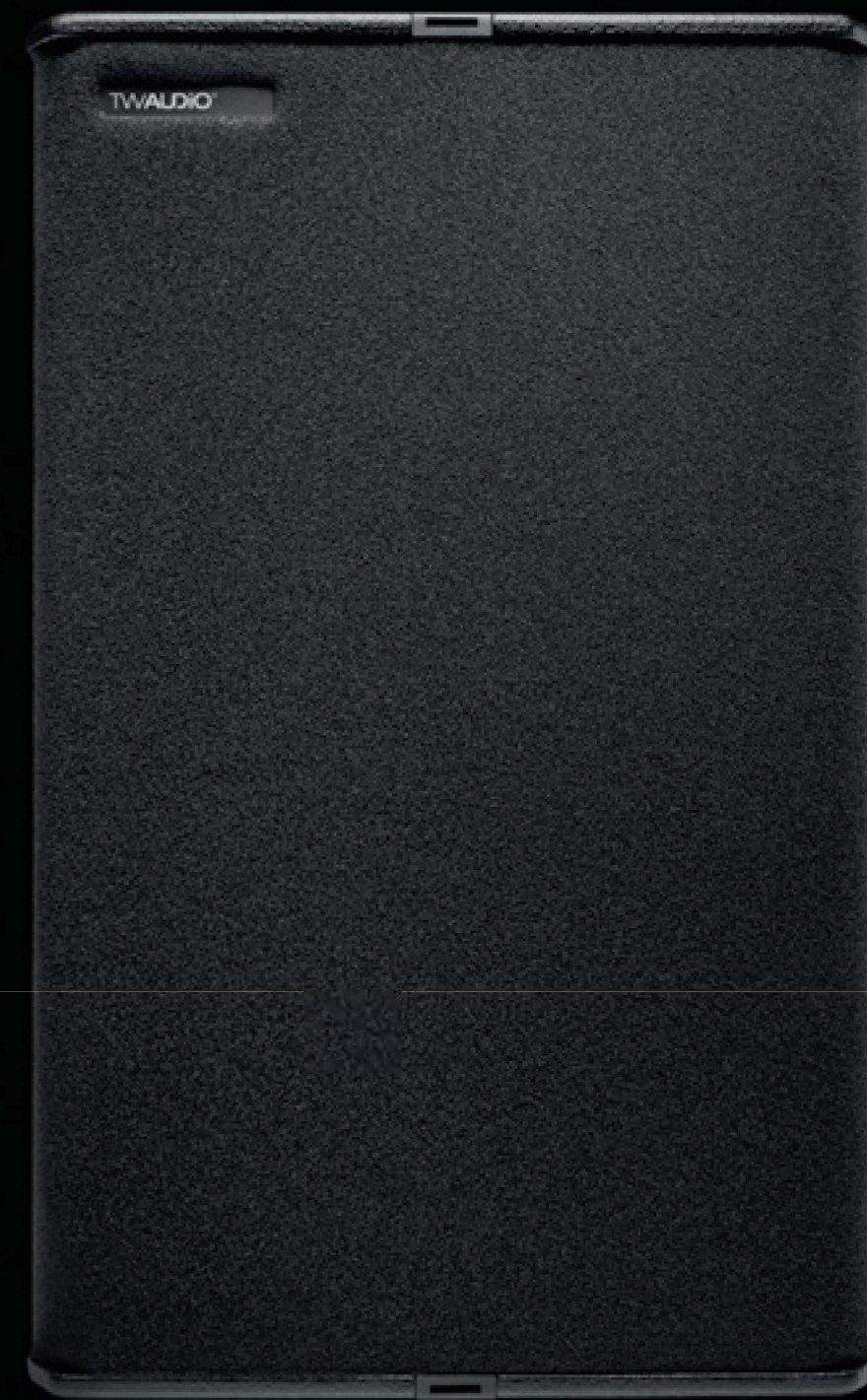


TWALDIO®



simply your sound.

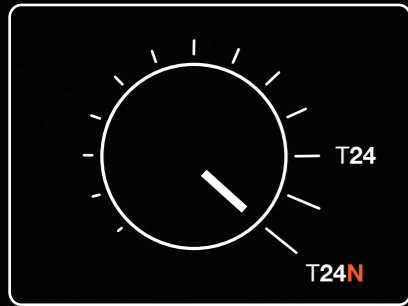
TW AUDIO GmbH
Osterholzallee 140-1
71636 Ludwigsburg

Tel.: +49 (0) 71 41 - 48 89 89 0
Fax: +49 (0) 71 41 - 48 89 89 99
web: www.twaudio.com
mail: info@twaudio.com

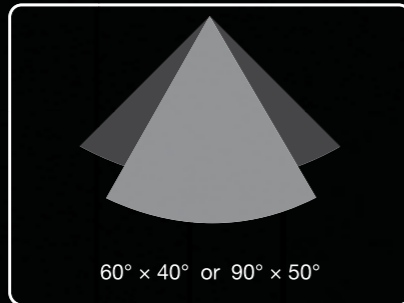
Made in
Germany

T24N

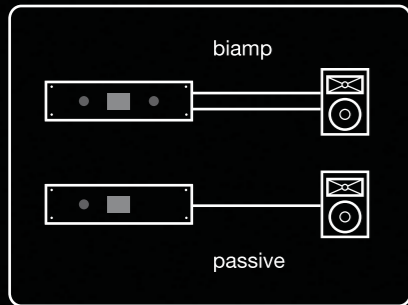
+ Sound



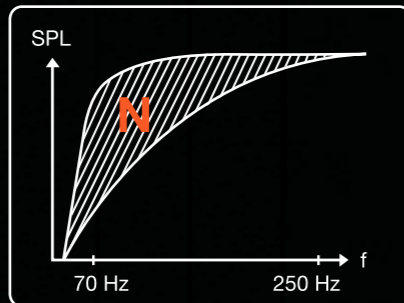
+ Coverage



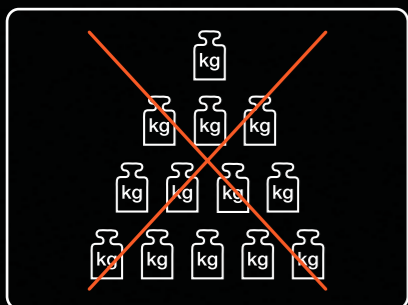
+ Flexibility



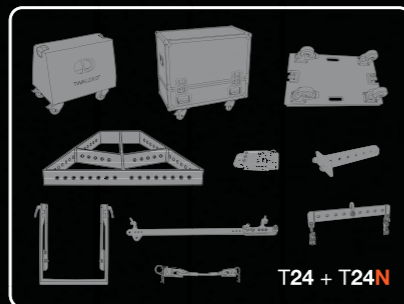
+ Frequency range



- Weight



= Accessories



For countless users in the live and installation sector, it was its predecessor who set the standards.

And now? The good gets better: The T24N is the logical development of TW AUDIO's 10 year old classic T24. But most of the innovations only become apparent at second glance:

Specially designed 12" neodymium speakers, combined with the new enclosure concept significantly expand the frequency response in the low-mid bass range, and confirm the top part's full-range performance. In the mid-high range, the newly developed 1.4" driver features a 3" titanium membrane.

The result: silky peaks, excellent tonal coupling to the 12" drivers, and added dynamics, with reduced distortion and lower power compression.

Type	T24N	
Drivers	2 x 12" LF 1 x 1,4" HF	
Frequency range	65 – 18000 Hz	
Power capacity Program / peak	1400 / 2400 W (biamp LF) 220 / 400 W (biamp HF)	1400 / 2400 W (passive)
Impedance	4 Ω (biamp LF) 8 Ω (biamp HF)	4 Ω (passive)
Coverage (h x v)	60° x 40° oder 90° x 50°, HF-Horn rotatable	
Sensitivity 1W / 1m	107 dB (biamp LF) 112 dB (biamp HF)	110 dB (passive)
SPLmax / 1 m	143 dB	
Connection	2 Speakon NL4, Pin1 HF / Pin2 LF (biamp)	2 Speakon NL4, Pin1 (passive)
Dimensions (h x w x d)	706 x 440 x 440 mm	
Weight	33 kg	
Finish	Warnex structure paint	
Accessories	CaseT24, FDB30, SBT24, CBT24, BLT24, MCT24, BAT24, BBT24, BCT24, CoverT24	
Options	RAL Farben	

But wait, there's more: The serial 60 x 40-degree horn can easily be replaced with a 90 x 50-degree variant using just four screws. And both horn versions can also be rotated by 90 degrees for special purposes. The T24N can be switched over from passive to biamp operation. And things are a lot more streamlined despite all the new features: 13 kg lighter – the "NeoClassic" only weighs a 33 kg, suitable for one person to lift.

And for those who already have the T24: All T24 accessories still fit. Furthermore, both T24 versions – passive and active – can play together with the relevant presets.

The NeoClassic