



As for low end, the VERA S33 is leading the way in subwoofer design. Comprising an 18" speaker at the front and a 15" speaker at the rear, the bi-amplified S33 offers preset options for different dispersion patterns.

Cardioid mode is optimised for maximum attenuation of rearward sound dispersion and is capable of achieving attenuation higher than 15 dB over the entire LF spectrum.

End-fire mode is optimised for maximum sound pressure at the front with simultaneous partial reduction at the rear.

In action, the S33 is unlike traditional subwoofers. The inherent directivity of each sub creates a more solid and musical low frequency experience, particularly in naturally reverberant venues. Yet artists on stage and those working in back of house are spared the unwelcome impact of excessive low-end spill.

As with all TWAUDIÖ solutions, the VERAS33 can be used in a wide variety of configurations, depending on the specific audio challenges faced. The same width as the VERA36 and equipped with the same rigging, S33 subs can easily and unobtrusively be integrated into VERA36 arrays. They can also be deployed in traditional left-right stacks, horizontal rows in front of the stage, vertical stacks or in flown arrays as well as in any combination with B-series subs.

Key Features

- » Two aligned chassis, (18" front / 15" rear) for cardioid and endfire mode from one enclosure
- » Cardioid, Hypercardioid, Endfire and Omni modes (preset dependent)
- » Pole mount flange for operation with top on a distance rod
- » Integrated rigging system for VERA36 arrays
- » >15 dB attenuation of the entire transmission range at the rear of the subwoofer in cardioid mode
- » 134 dB SPLmax (endfire mode)
- » Coherent phase response with all TWAUDIÖ loudspeakers
- » Operation with dedicated TWAUDIÖ presets on Lab.gruppen, Powersoft or Dynacord TGX and IPX amplifiers

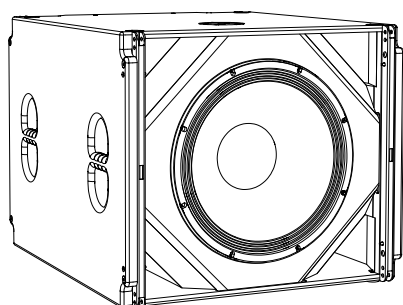
Applications

- » Galas, events and shows
- » Churches, houses of worship, religious places
- » Theatres and cultural places
- » Bars and restaurants
- » Arenas and sports venues
- » Concerts and touring

VERA S33

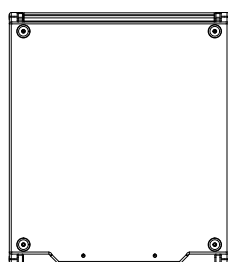
DATASHEET

Technical Data

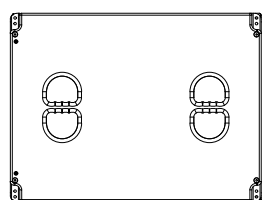


Drivers	1x 18" LF front 1x 15" LF rear
Frequency range	33 - 120 Hz
Power capacity program/peak	2400 / 4800 W 18" 2000 / 4000 W 15"
Impedance	8 Ω 18" 8 Ω 15"
Coverage (h x v)	cardioid / hypercardioid
Sensitivity 1 W / 1 m	99 dB
SPL max / 1 m	134 dB
Connection	speakON® NL4 2 \pm 18" NL4 1 \pm 15"
Dimensions (H x W x D)	606 x 700 x 800 mm 23.86 x 27.56 x 31.50 in
Weight	67,2 kg 148.2 lbs
Finish	Polyurea-coated (RAL colors optional: Warnex textured paint)
Accessories	see twaudio.com

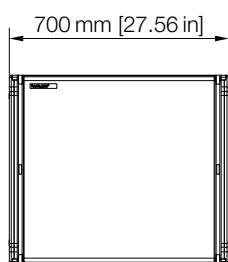
Technical Drawing



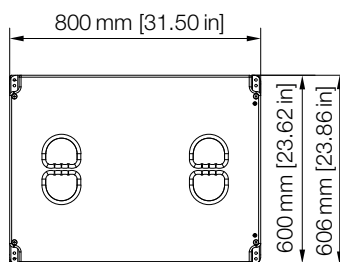
bottom view



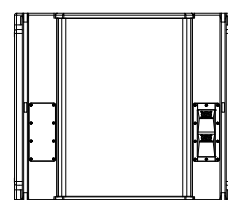
right view



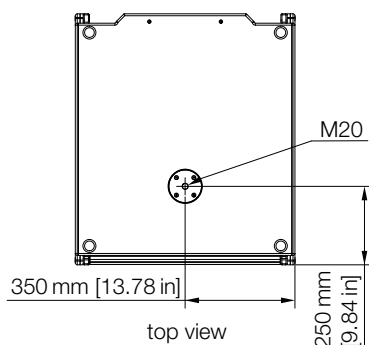
front view



left view



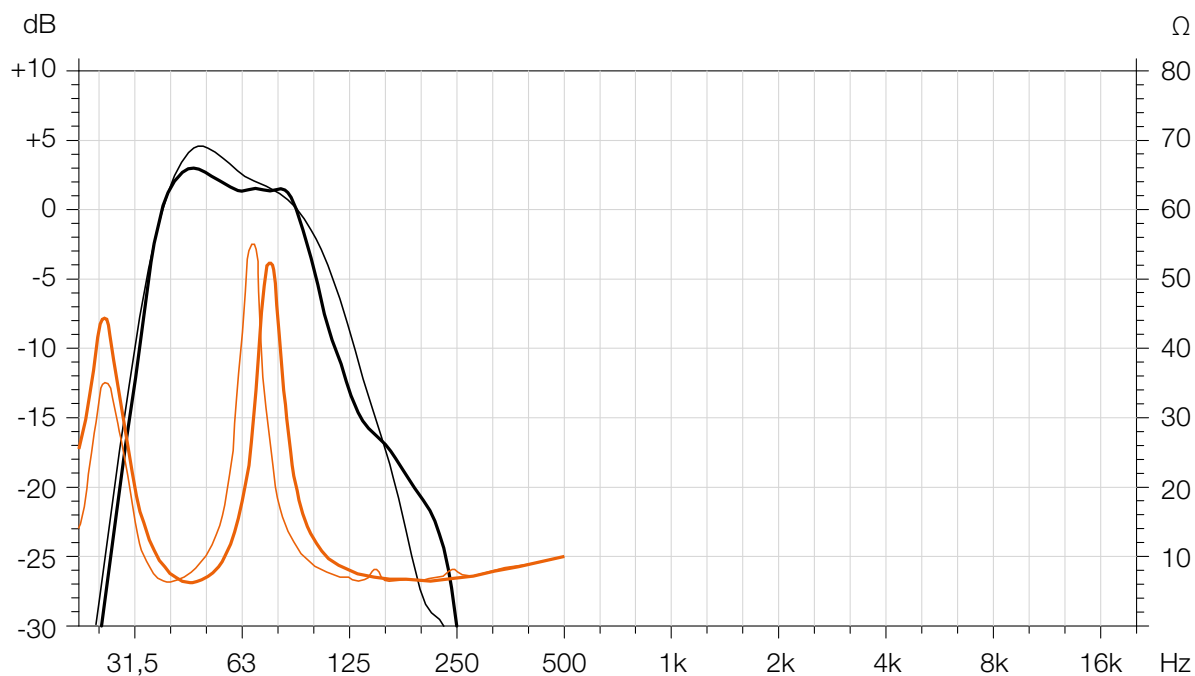
rear view



top view

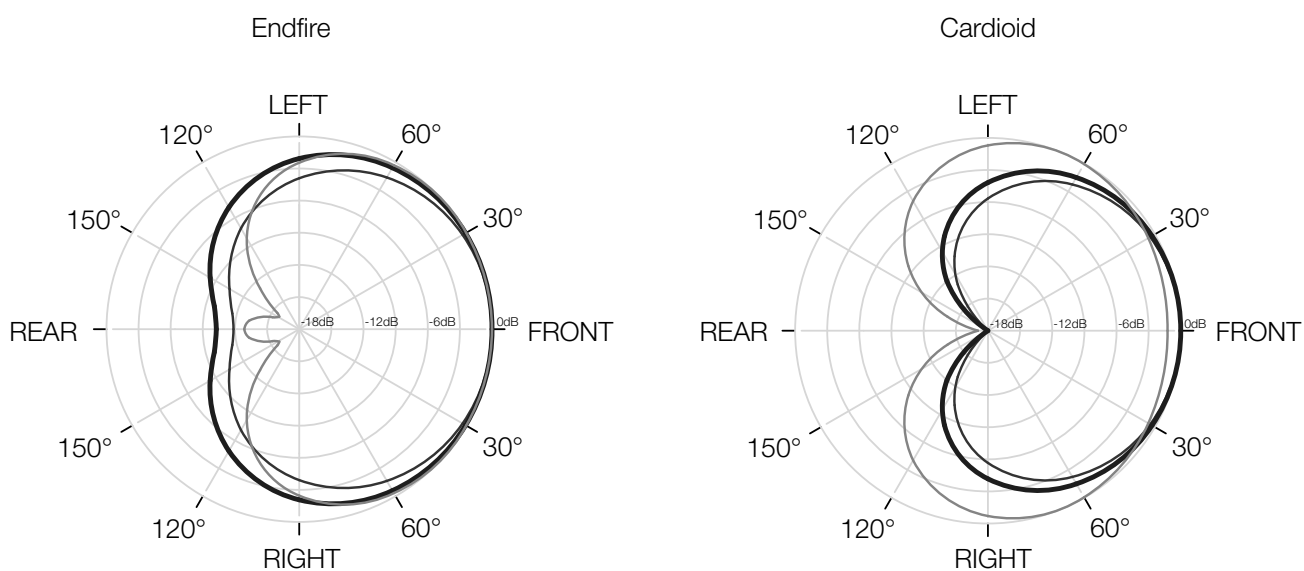
Frequency Response

FULL mode endfire / **cardioid** | IMPEDANZ front / rear



Polar Pattern

40Hz | 63Hz | 100Hz



Architect Specifications

The loudspeaker shall consist of a two separated bass-reflex chamber enclosure driven and protected by a dedicated powered amplified controller. The loudspeaker shall be a biamped dual-channel subwoofer with directional radiation patterns depending on preset used. The loudspeaker shall have a higher than 15 dB attenuation of the rearward sound dispersion.

The enclosure shall feature one 18" long excursion neodymium LF transducer at the front and one 15" long excursion neodymium LF transducer at the rear for cardioid and endfire mode from one enclosure.

The usable system bandwidth shall be 33 Hz to 120 Hz.

Maximum peak SPL shall be 134 dB. The long-term handling capacity shall be 2400W program and 4800W peak at the front and 2000W program and 4000W peak at the rear. The nominal impedance of the loudspeaker shall be 8 Ω at the front and at the rear.

The enclosure cabinet construction shall consist of first grade birch plywood. The front and the rear of the enclosure shall be protected by a perforated, powder-coated steel with flame retardant, hydrophobic and acoustically transparent black 3D mesh fabric. The dimensions shall be 700 mm (27.56 in) in width, 606 mm (23.86 in) in height and 800 mm (31.50 in) in depth and the enclosure weight shall be 67.2 kg (148.2 lbs).

The enclosure shall feature four integrated ergonomic handles, four stacking rubber feet and a M20 pole mount flange to adopt a distance rod when used with a top loudspeaker. The enclosure shall be connected via two parallel 4-pole speakON® sockets.

The loudspeaker shall be the TWAUDIO VERA S33.

References

The response curves of the system are available upon request – support@twaudio.com

Manufacturer:
TWAMBO GmbH
Karl-Hofer-Str. 42
14163 Berlin, Germany



TWAUDIO®

TWAMBO GmbH
Karl-Hofer-Str. 42
14163 Berlin
Germany

Phone: +49 7141 488989-0
Fax: +49 7141 488989-99
Mail: info@twaudio.com